

Product datasheet



sHLA-C*07:01bio

Cw*07:01, Cw*0701, C*0701, C0701
Cw0701, C*07, C07, Cw*07, Cw07, Cw7

Serological Name	Cw7
Peptide Load	Endogenous
Modification	Unmodified
Conjugation	Biotin
SKU	C0701bio

Product Description

Allele Name	C*07:01 B2m
HLA Class	HLA Class I
HLA Gene Locus	HLA-C
Alternative Allele Name A Chain	Cw*07:01, Cw*0701, C*0701, C0701, Cw0701, C*07, C07, Cw*07, Cw07, Cw7
Alternative Allele Name B Chain	-
Description	Recombinant, truncated Class I soluble Human Leukocyte Antigen (sHLA), naturally folded and glycosylated, loaded with endogenous peptides.
Serological Name	Cw7
Serological Split	-
Bw4/Bw6 Assignment	Bw6
Bw4/Bw6 Sequence	SLRNLRG
Allele Frequency [World Population]	
A chain	7.4%
B chain	-

Associated products

[C0701](#)
[C0701pe](#)

Product Specification

Product name	HLA-C*07:01bio
HLA Species	Human
Host Cell Line Species	Human
Clone Designation	G2A6
Tail Specification	VLDL
Peptide Load	Endogenous
Modification	Unmodified
Conjugation	Biotin
Complexity	Monomer
Protein Format	Recombinant, truncated, soluble, non-modified, biotinylated, endogenously loaded
Storage Temperature	4 °C (This product should be stored undiluted)
Form	Liquid
Concentration	300.0 µg/µl
Formulation	PBS/0.02% Sodium Azide
pH	7.4
Purification Method	Affinity Chromatography
Grade	Research Use Only [RUO]
Authentication Verification	Sequence Based Typing

Protein Sequences

Alpha Chain Sequence	CSHSMRYFDT AVSRPGRGEP RFIISVGYVDD TQFVRFDSDA ASPRGEPRAP WVEQEGPEYW DRETQNYKRQ AQADRVSLRN LRGYYNQSED GSHTLQRMYG CDLGPDGRLR RGYDQSAYDG KDYIALNEDL RSWTAADTAA QITQRKLEAA RAAEQLRAYL EGTCVEWLRR YLENGKETLQ RAEPPKTHVT HHPLSDHEAT LRCWALGFYP AEITLTWQRD GEDQTQDTEL VETRPAGDGT FQKWAAVVVP SGQEQRYTCH MQHEGLQEPL TLSSVVSTDD DLA
Beta Chain Sequence	IQRTPKIQVY SRHPAENGKS NFLNCYVSGF HPSDIEVDLL KNGERIEKVE HSDLSFSKDW SFYLLYYTEF TPTEKDEYAC RVNHVTLSPQ KIVKWRDRM

Related Products

[C0702bio](#)
[C0704bio](#)
[A0201bio](#)
[B0702bio](#)

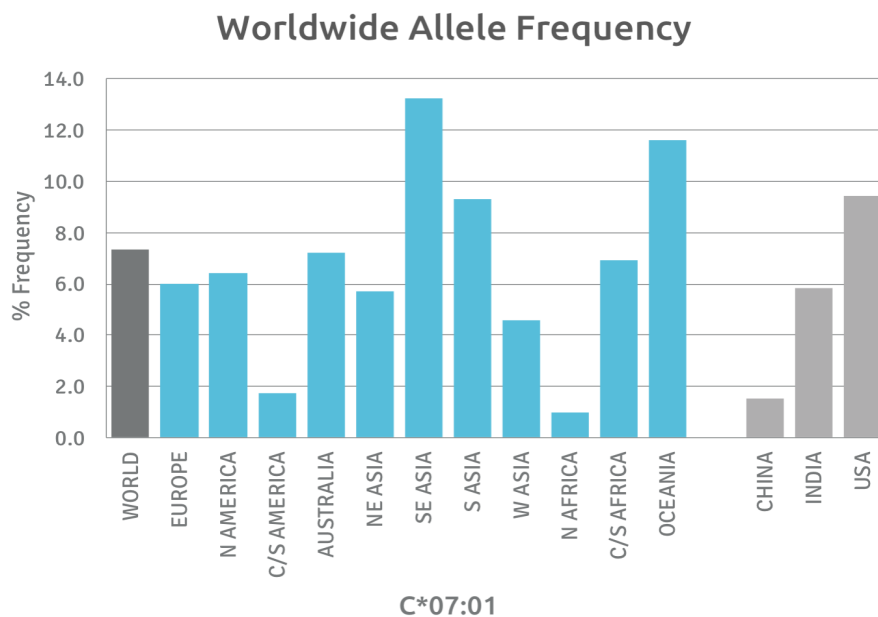
Applications

HLA Sandwich ELISAs
HLA Direct ELISAs
HLA-Sera Antibody Assays
HLA Controls in ELISA Assays
HLA Assay Standards
HLA Blocking Assays
HLA Neutralizing Assays
HLA Competition Assays
HLA Bead Assays
HLA Immunization Procedures

Recommended Antibodies

W6/32
Anti-B2m

Allele Frequency



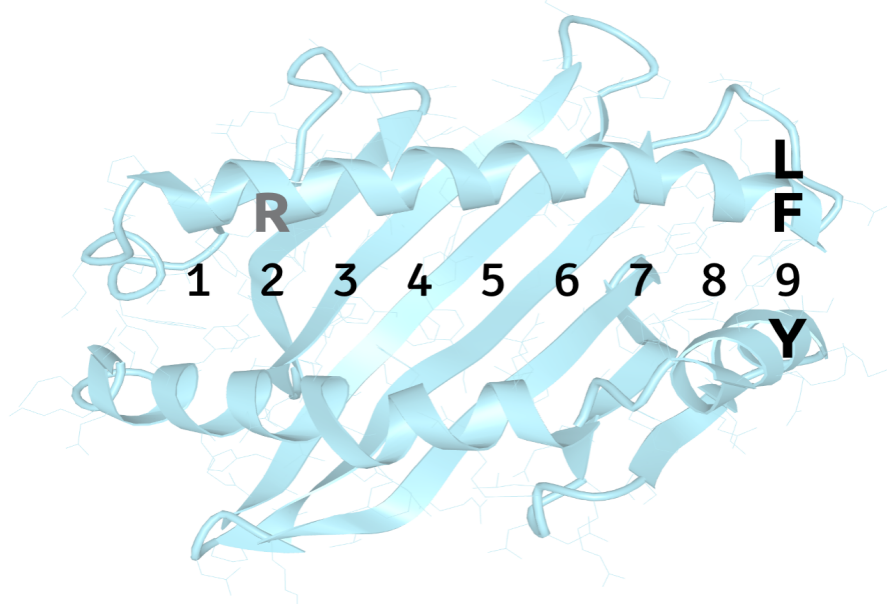
Please note:
ALL PRODUCTS ARE FOR RESEARCH USE ONLY. NOT FOR COMMERCIAL USE IN DIAGNOSTIC PROCEDURES.
For more information, please visit our Policies section on our website. For licensing inquiries, please contact

licensing@hlaprotein.com

 HLA Protein
PURE PROTEIN, LLC

Motif

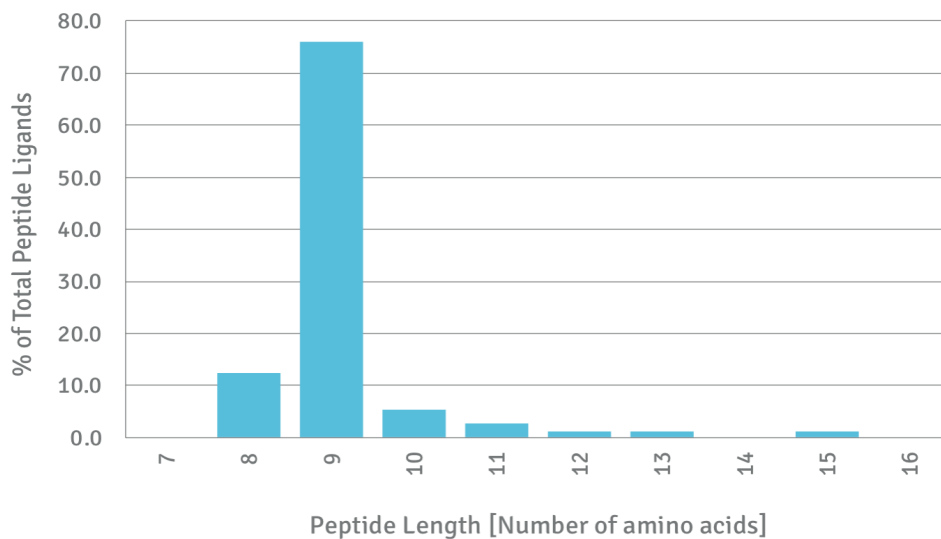
C*07:01 BINDING MOTIF



Length Distribution

HLA Length Distribution

C*07:01



Please note:

ALL PRODUCTS ARE FOR RESEARCH USE ONLY. NOT FOR COMMERCIAL USE IN DIAGNOSTIC PROCEDURES.

For more information, please visit our Policies section on our website. For licensing inquiries, please contact

licensing@hlaprotein.com

